



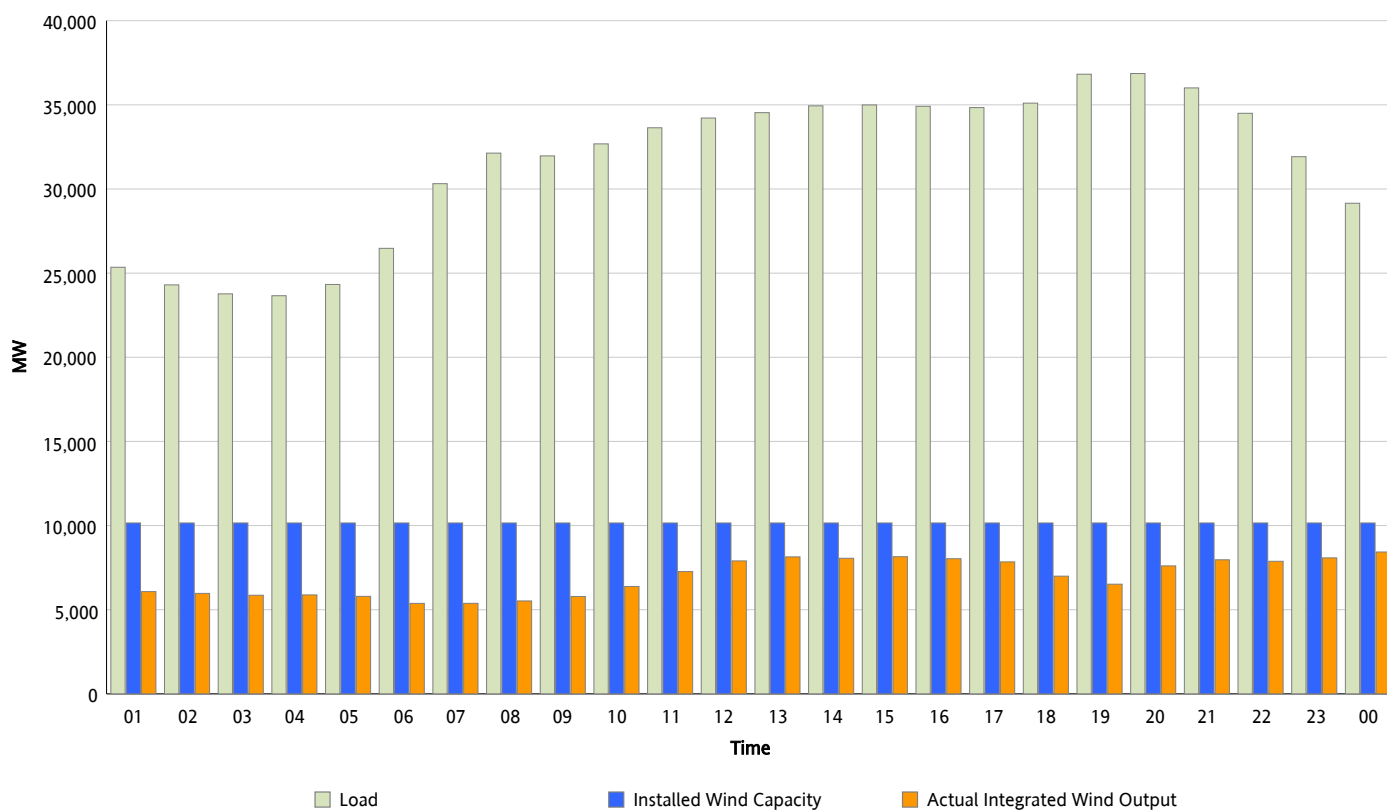
ERCOT Grid Operations

Wind Integration Report : 01/28/2013

Peak Load	36,862 MW
Load Peak Hour (HE)	20
Wind Over Peak	7,605 MW
Wind Record 12/25/12	8,638 MW
Max Wind Value*	8,629 MW
Wind Peak Time	23:55
Wind Integration %	30.68 %

Hourly Average Actual Load vs. Actual Wind Output

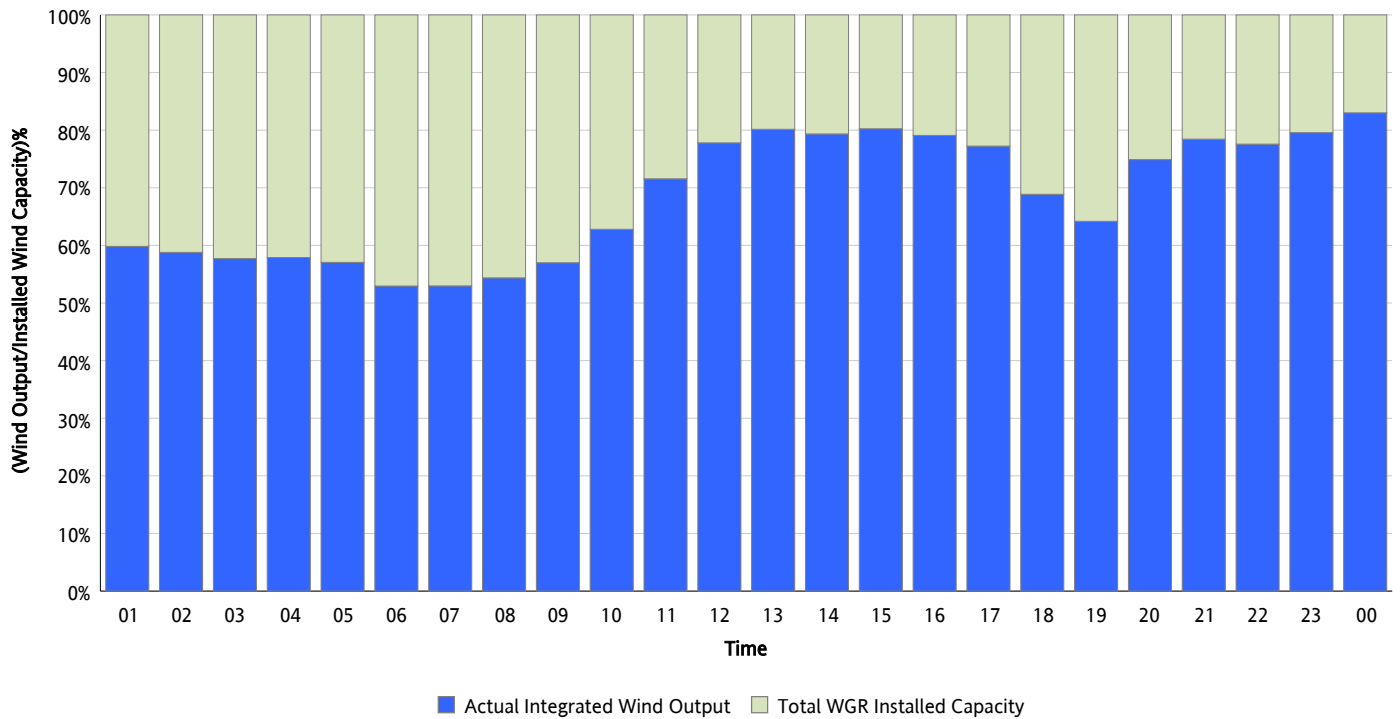
01/28/2013



* Wind Record and Wind Max represent instantaneous values and the rest of the values are integrated over the hour

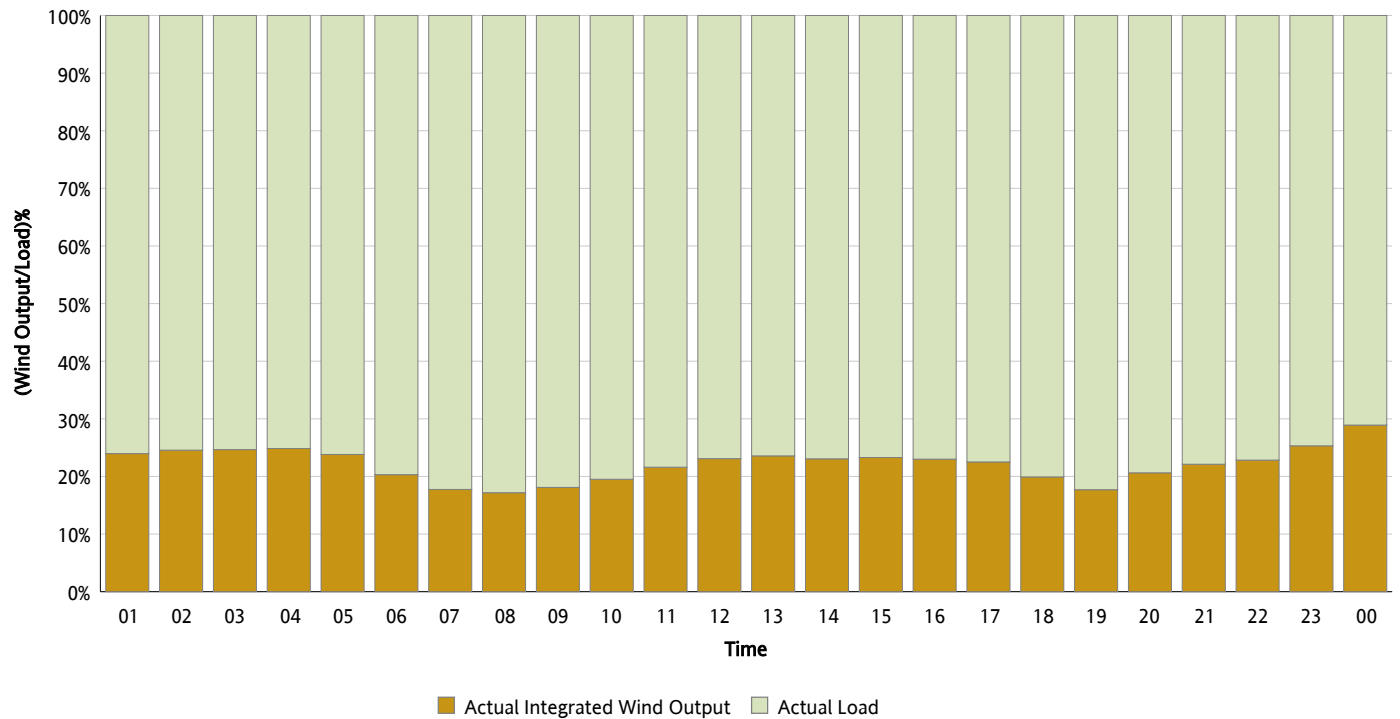
Actual Wind Output as a Percentage of the Total Installed Wind Capacity

01/28/2013



Actual Wind Output as a Percentage of the ERCOT Load

01/28/2013



ERCOT Load vs. Actual Wind Output

01/21/2013 - 01/28/2013

